



## **ExitCare v7.x Convert Archive Utility Guide**

April 2008

# Table of Contents

- GETTING STARTED.....3**
  - Introduction.....3*
  - Pre-requisites.....3*
- SETUP .....3**
  - ExitCare Convert v6.7/8 Archive utility.....3*
  - Other Resources.....8*

# GETTING STARTED

## Introduction

ExitCare has been designed to work with all versions of MS SQL 2005, including the free MS SQL Server Express. The free Express edition of MS-SQL Server is best suited for smaller installations. If your installation supports many concurrent users, we recommend the full version of MS-SQL 2005 for optimal performance. This guide is only intended for upgrading from version 6.7/ 6.8 to version 7.0.

## Pre-requisites


1. Microsoft System requirements <http://www.microsoft.com/sql/prodinfo/sysreqs/default.aspx>
2. Microsoft SQL Server Express (free) <http://msdn2.microsoft.com/en-us/express/bb410791.aspx>  
Or SQL Server <http://www.microsoft.com/sql/default.aspx>
3. Installing Microsoft SQL Server <http://msdn2.microsoft.com/en-us/library/ms143516.aspx>

## SETUP

The conversion needs to be run from the ExitCare 6.7/8 server (or accept slower performance, if you run from a workstation where ExitCare 6.7/8 is installed).

### ExitCare Convert v6.7/8 Archive utility

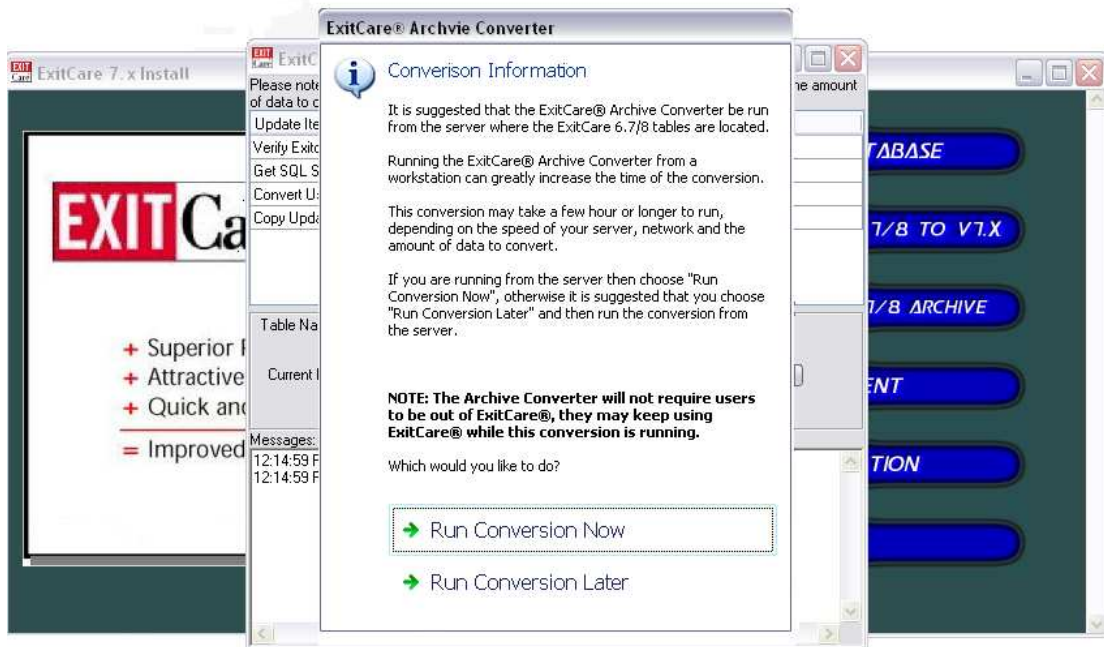
1. Insert the ExitCare v7.0 CD into the CD/DVD ROM Drive of the server that has ExitCare 6.7/8 to begin the conversion process.

If the menu does not automatically appear, double click  menu.exe , located on the root of the CD.

2. Click **CONVERT v6.7/8 ARCHIVE**



3. After reading the Conversion Information, click **Run Conversion Now**.



4. **Select the Database Server:** from the drop down list select or type in the name of the SQL Database Server you wish to archive ExitCare into. (below)

*Note: server names in this tutorial do not reflect your environment and are for illustration purposes only.*

**SQL Connection Form**

Database Connection Information

ExitCare 7 now uses Microsoft SQL Server for the data engine.  
Please enter the connection information below.  
If you have do not know the connection information or you do not have a SQL server, please select "Cancel" and then get the connection information and install SQL Server if needed.

SQL Server

1) Select the Database Server *Select the Server Name in your environment to convert 6.7/8 archive*

SQL Server Name: TESTSERVER

2) Select the Authentication Type

Use Windows Integrated Authentication

Use SQL Server Authentication

User Name:

Password:

3) Database Name

Database Name:

⚡ Test Connection

✓ OK

✗ Cancel

5. **Select the Authentication Type:** (below), enter information and Test Connection

**SQL Connection Form**

Database Connection Information

ExitCare 7 now uses Microsoft SQL Server for the data engine.  
Please enter the connection information below.

If you do not know the connection information or you do not have a SQL server, please select "Cancel" and then get the connection information and install SQL Server if needed.

**SQL Server**

1) Select the Database Server

SQL Server Name: TESTSERVER

2) Select the Authentication Type

Select the appropriate Authentication type for your network environment. For this illustration SQL Authentication is used.

Use Windows Integrated Authentication

Use SQL Server Authentication

User Name: SA

Password: \*\*\*\*\*

3) Database Name

Database Name:

Test Connection

OK Cancel

6. **Database Name:** select a pre-existing database – the archiving process requires an existing SQL database for a successful version upgrade. This SQL database is created and setup up previously using the Install Database Utility from the Menu.

**SQL Connection Form**

Database Connection Information

ExitCare 7 now uses Microsoft SQL Server for the data engine.  
Please enter the connection information below.

If you do not know the connection information or you do not have a SQL server, please select "Cancel" and then get the connection information and install SQL Server if needed.

**SQL Server**

1) Select the Database Server

SQL Server Name: TESTSERVER

2) Select the Authentication Type

Use Windows Integrated Authentication

Use SQL Server Authentication

User Name: SA


Password: \*\*\*\*\*

3) Database Name

Select the database to archive files to - database must exist.

Database Name: Database1

Test Connection OK Cancel

Testing your connection is recommended, please click  Test Connection button.

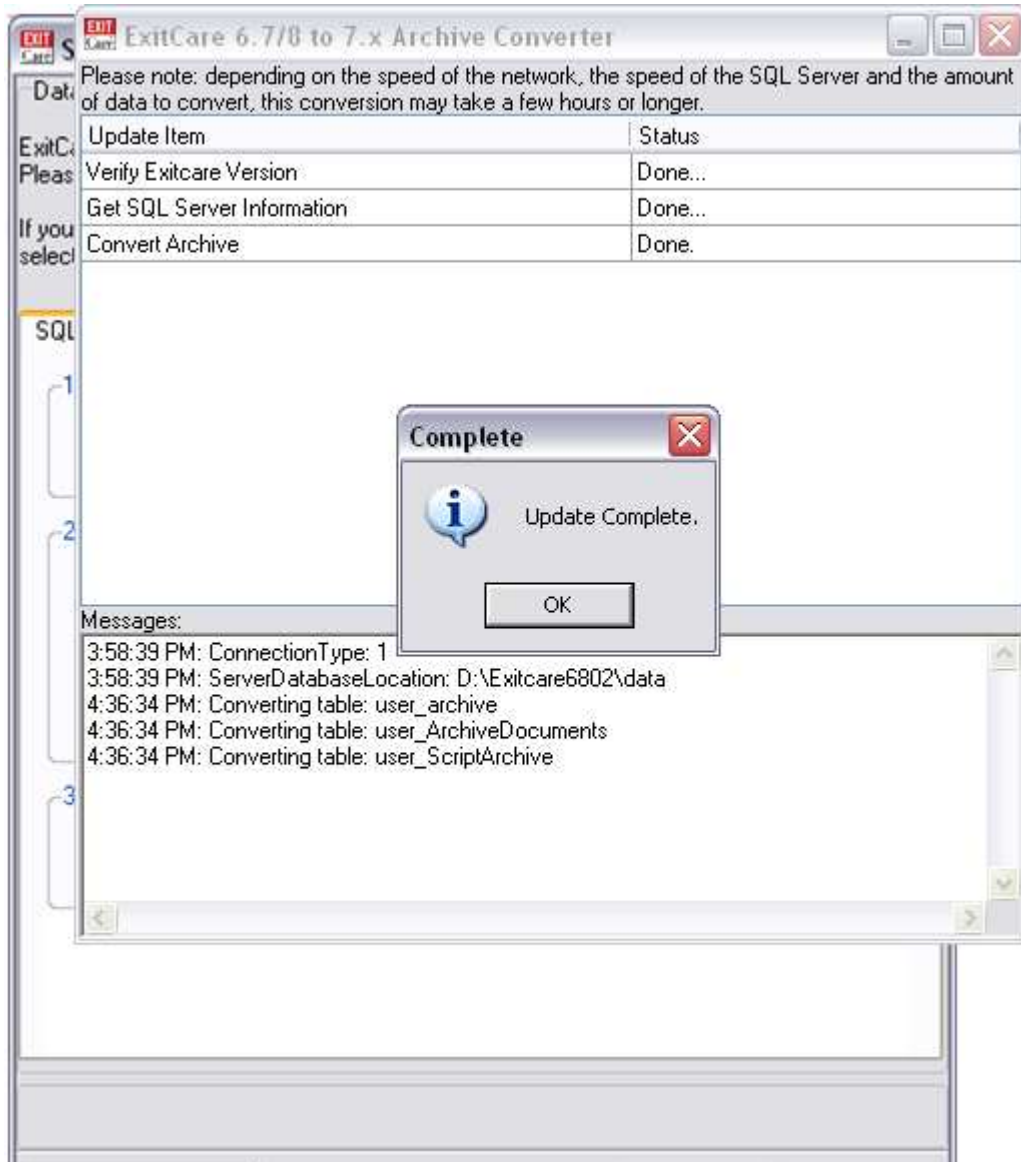
**Test SQL Connection**

Connection test was successful.

OK

- Click **OK** on the SQL Connection Form window – the archive conversion process begins. The application returns confirmation of successfully archived files with a pop-up screen informing you update was completed; click OK.

*Note: The archive conversion process may take a few hours or longer to complete.*



## Other Resources

Installing Microsoft SQL Server <http://msdn2.microsoft.com/en-us/library/ms143516.aspx>

Microsoft additional SQL Server 2005 Tools and Utilities <http://technet.microsoft.com/en-us/sqlserver/bb671104.aspx>

<http://www.microsoft.com/sql/prodinfo/sysreqs/default.msp>