



Patient Information System

ExitCare® Ambulatory Care Product Fact Sheet

Description

One of the founding principals behind the ExitCare Patient Information System was the creation of documents that would improve patient compliance. If the patient does not read a document, it can not have a positive impact on their care. Since ExitCare's introduction in 2000, it has evolved to become the easiest to use and fastest growing patient education software in the industry. It is now used in Hospitals, clinics and private practice offices across the country.

Patient Education Content

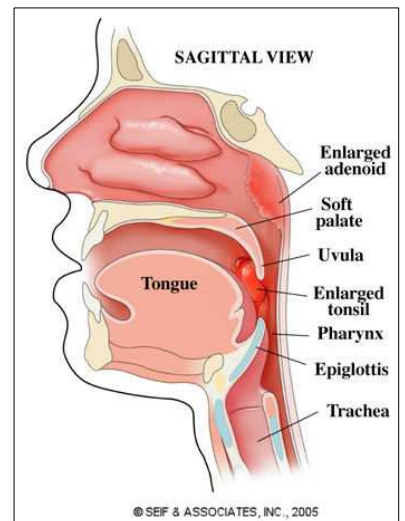
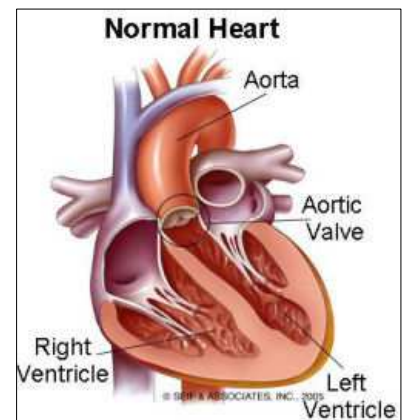
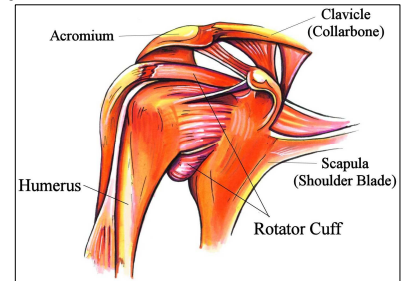
- Authored by physicians
- Documents included from experts such as National Headache Foundation, the United Ostomy Association, the American Diabetes Association, the Anemia Society, and other similar organizations
- Updated quarterly (both documents and drug information sheets)
- Reading level from 6th to 8th grade based on Flesch-Kincaid
- 3,000+ English topics covering all medical specialities
- Over 280 Sports Medicine topics with detailed rehab exercises
- ExitLabs™ provides patient friendly explanations to 300+ lab tests.
- Most common topics have been translated into **Spanish, Russian, Vietnamese, and Portuguese**. Other languages available.
- Font size can be increased to 24 point for visually impaired patients
- Document format is designed to encourage readership with bullets, organized layout and color
- Text is augmented with color illustrations where appropriate
- Patient specific parameters such as temperature thresholds to seek further care, or amount of weight bearing allowed are easily set

Software features

- Very intuitive interface – easy to learn
- Macro system allows users to establish sets of documents, work excuses, prescriptions, drug info sheets, etc. for repetitive discharges
- ExitCare can be easily customized. Most settings for document shortcuts, categories, drug lists, additional notes, scripts, and more can be set up by User, Department or Facility
- Edit existing documents, saving changes as templates if desired
- Easily add custom documents
- Permanent Patient Archive of all printed documents & medications

Medication Management with ExitMeds™

- First DataBank (FDB) drug database with over 21,000 drug names.
- Over 2,850 drug-specific informational handouts in English & Spanish
- Over 1,000 drug defaults to easily prescribe any of the top 200 meds
- Electronic prescription writing
- Drug interaction checking
- Medication Reconciliation
- Patient Medication Schedules



For further information please call ExitCare at (800) 694-6669 or visit www.ExitCare.com