



Patient Education Solutions

ExitCareED™ Product Fact Sheet

Description

One of the founding principals behind the ExitCare Patient Information System was the creation of documents that would improve patient compliance. If the patient does not read their instructions, they cannot have a positive impact on their care. Since ExitCare's introduction in 2000 at the Emergency Nurses Association, it has evolved to become the easiest to use and fastest growing patient education software in the industry, now used in over 1,300 medical facilities.

Patient Education Content

ExitCare topics are:

- Authored by physicians
- Reviewed by TSG (The Sullivan Group) to ensure documents provide risk management protection to users, and full disclosure to patients
- Updated quarterly (both documents and drug information sheets)
- 6th to 8th grade reading level based on Flesch-Kincaid
- 2,300+ English topics – more ED topics than anyone!
- The most common topics have been translated into Spanish, Russian, Vietnamese, & Portuguese. Other languages available.
- Large Font (up to 24 point font) for visually impaired patients
- Document format is designed to encourage readership with bullets, subheadings and color
- Text is augmented with color illustrations where appropriate
- Patient specific parameters such as temperature thresholds to seek further care, or amount of weight bearing allowed are easily set

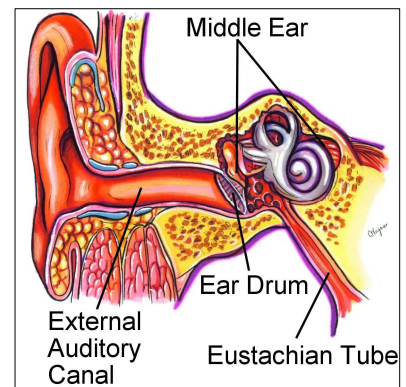
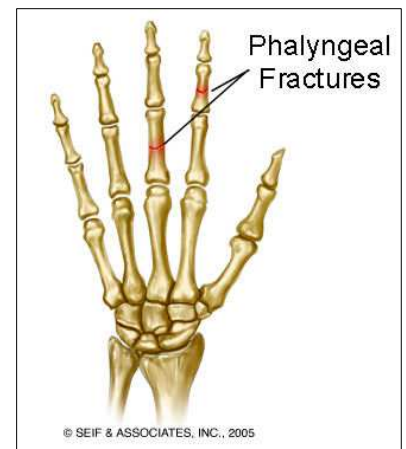
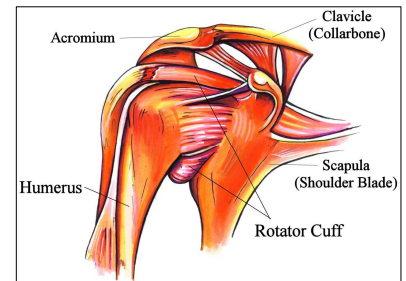
Software features

User interface is very intuitive. The software includes a number of features including:

- Macro system allows users to establish sets of documents, work excuses, prescriptions, drug info sheets, etc. for repetitive discharges
- Diagnosis System easily finds all related documents for a diagnosis
- ExitCare can be easily customized. Most settings for document shortcuts, categories, drug lists, additional notes, scripts, and more can be set up by User, Department or Facility
- Edit documents, saving changes as templates if desired
- Permanent Patient Archive of all printed documents
- Fax or email to follow-up caregivers
- Full HL7 Interface options (unidirectional & bidirectional) available

Medication Management with ExitMeds™

- First DataBank (FDB) drug database with 21,000+ drug names.
- Over 2,850 drug-specific informational handouts in English & Spanish
- Over 1,000 drug defaults to easily prescribe any of the top 200 meds
- Electronic prescription writing allows you to write prescriptions with as few as two mouse clicks
- Drug interaction checking – both drug to drug and patient allergy to drug
- Medication Reconciliation to meet JCAHO requirements
- Patient Medication Schedules to help your patients comply with their medication regime



For further information please call ExitCare at (800) 694-6669 or visit www.ExitCare.com